



Internal Review of IPBES

**Nationals Forum zu IPBES 6
Bonn, 21-22 Februar**

**Dr. Thomas Koetz
Head of Work Programme, IPBES Secretariat**



www.ipbes.net



**Food and Agriculture
Organization of the
United Nations**



Empowered People
Revised Justice



Outline

1. **Mandate and Methodology**
 2. **Results of internal review**
 3. **Next steps**
- 
-



1.

Mandate & Method

Mandate

- As part of the 1st work programme of IPBES, the Plenary, in decision IPBES-2/5, **mandated a review of the effectiveness of the administrative and scientific functions of IPBES** (deliverable 4 (e));
- The Plenary, at **IPBES 5**, **approved the terms of reference for the review** of the Platform at the end of its first work programme;
- Terms of reference foresee an **internal and external part of the review**, with the internal review to be undertaken in 2017 (between IPBES 5 and IPBES 6) and the external review to be undertaken in 2018 (between IPBES 5 and IPBES 6).
- For IPBES 6, the Plenary requested, for information, the report of the internal review and to make this report available to the external reviewers.



Objective

To review:

- Implementation of the **four functions** of IPBES;
- Application of the **operating principles** of IPBES;
- Effectiveness of the **procedures** for the development of IPBES deliverables;
- Effectiveness of the **institutional arrangements** of IPBES, including the Plenary, the Bureau, the MEP and the secretariat, including technical support units, the UN collaborative partnership arrangement and other arrangements with strategic partners and their interactions and procedures;
- Effectiveness of the IPBES **task forces and expert groups**, including the management of their work and the level of commitment of members;
- Effectiveness of the implementation of the **financial and budgetary arrangements**, including fundraising strategies;
- Effectiveness of processes for **stakeholder engagement and communication**.

To inform the development of the 2nd work programme

Methodology

- Questionnaire as main methodological instrument for review
 - 7 sections covering all issues as outlined in objectives
 - Together about 100 questions
 - Most questions to be answered using a semi-quantitative scale (1 (very poor/disagree strongly) – 5(very good/agree strongly))
 - All question offer possibility to further expand on responses providing comments (qualitative responses)
 - Internal review targeted at:
 - IPBES National focal points
 - MEP and Bureau
 - Secretariat, including TSUs
 - Members of Task Forces
 - Co-Chairs and CLAs of assessment author groups

Methodology

- Questionnaire
 - made available on 22 May 2017, with a deadline of 7 August 2017 for response
 - completed by a total of 85 people, including
 - 9 members of the Bureau and 23 members of the MEP,
 - 21 national focal points,
 - 17 IPBES experts
 - 17 members of the secretariat (including TSUs)
 - Internal review report
 - comprising a self-assessment based on the responses to the questionnaire
 - contains an executive summary, which presents the key outcomes of the internal review as prepared by the internal review committee and endorsed by the Bureau and MEP
 - also contains a detailed analysis per section of the questionnaire, including considerations for the future: Statements in **bold font result directly from the quantitative analysis of the questionnaire**, while text in normal font originates from additional comments received via the questionnaire and includes aspects that the internal review committee chose to highlight based on the experience of its members.
-

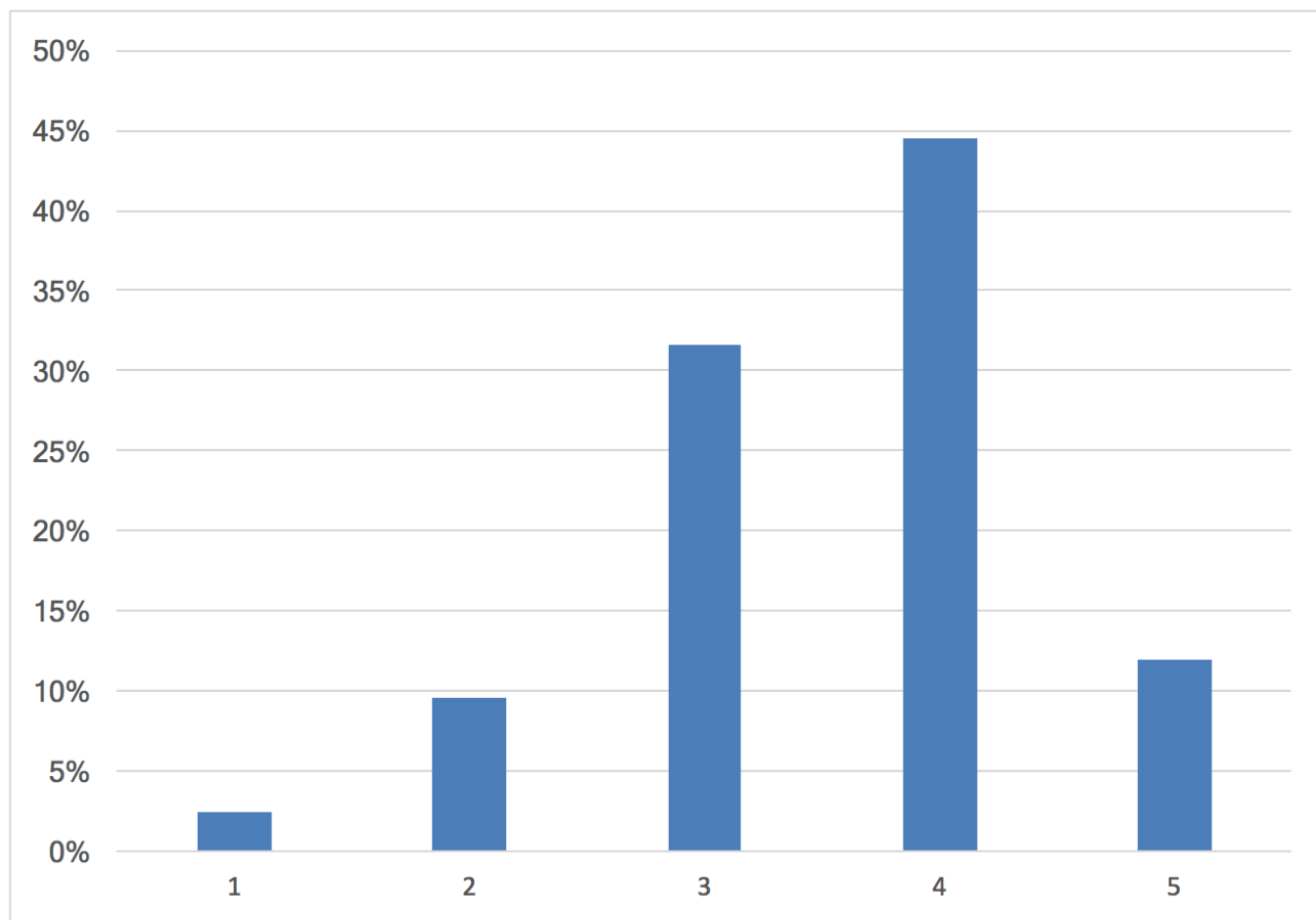


2.

Results of Internal Review

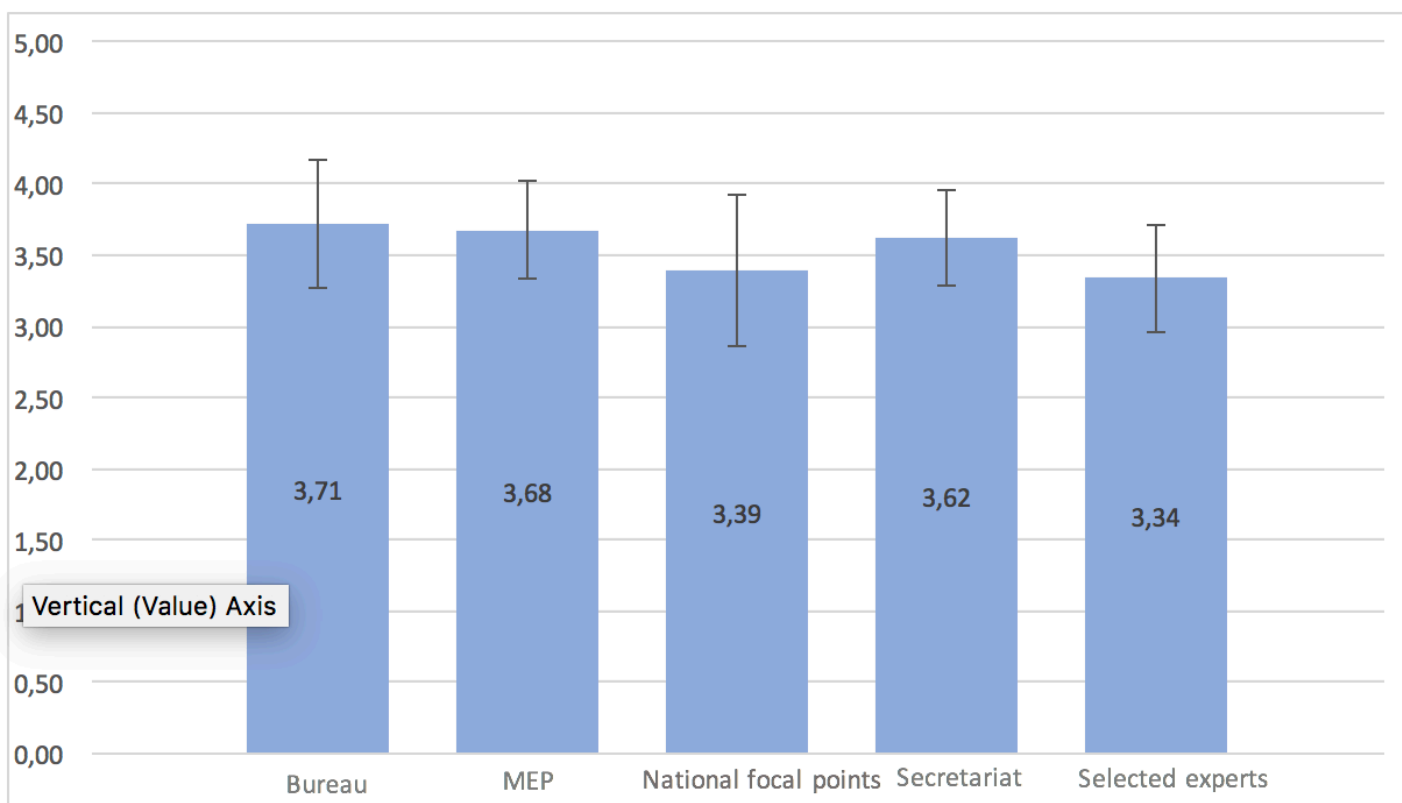
Results – internal review

Average percentage of responses received across all questions for each of the ratings, from 1 to 5



Results – internal review

Average response across all questions given by each category of respondents: members of the Bureau, Multidisciplinary Expert Panel, secretariat, including technical support units, IPBES national focal points and selected experts (co-chairs of task forces and expert groups and coordinating lead authors of assessments)



Results – internal review

- **Implementation of the work programme:**

- **The scoping processes for assessments are considered to have worked well, with the exception of the assessment of the sustainable use of wild species, where scoping such a complex issue via remote means was understood to be inappropriate.** More policy experts should be involved in the scoping processes to ensure the relevance of assessments to policymakers.
- **In order to enable IPBES to improve in such areas as its interdisciplinary and multidisciplinary approach, gender equity and balanced regional representation and participation in its structure and work,** the nominations of experts by Governments and organizations should include a higher number of experts with a background in social sciences and humanities, policy-making, female experts, experts on indigenous and local knowledge etc.
- **The scientific independence, credibility, relevance and legitimacy of IPBES assessments would benefit from increased input and comments in the peer-review process,** in particular from Governments. The regional dialogue meetings with IPBES national focal points were well received and could also be considered for future assessment processes as a way of assisting Governments in providing input and comments.

Results – internal review

- **Implementation of the work programme:**

- Unlike the assessment function, which was implemented on the basis of a set of agreed procedures, implementation of the capacity-building, knowledge generation and policy support tools and methodologies functions required the establishment of a procedural and institutional foundation. As a result, implementation of these functions has generally been slower, but has been improving recently with relevant procedures being established.
- On capacity building: **The fellowship programme has been well received. The performance of the capacity-building forum was rated overall as “fair”** and its structure may need to evolve. The regional dialogue meetings were well received; their performance may be further improved by holding them earlier in the peer review process.
- On knowledge and data: **Aspects of the work on knowledge and data are considered overall as “fair”**, and work contributing to this function should be enhanced in the future. Where catalysing the generation of new knowledge is concerned, only limited activities have taken place to date, while knowledge gaps are being identified in the light of the assessments.

Results – internal review

- **Implementation of the work programme:**

- On ILK: **Aspects of the work related to recognizing, respecting and adequately addressing indigenous and local knowledge were considered overall as “good” or between “fair” and “good”.** This work is considered to have been advanced in a major way through the adoption of the approach to recognizing and working with indigenous and local knowledge.
- On policy support: **The usefulness of the catalogue of policy support tools, which includes the catalogues for assessments, was rated, on average, as fair.** The catalogue is at an early stage of development, however, and a conclusive assessment of its usefulness is therefore not possible at this point in time. Furthermore, progress was limited by the funds allocated to support this deliverable. Also through methodological assessment of scenarios and models and the development of the preliminary guide on values and related work.
- **Synergies between the four functions of IPBES are considered to be an area in need of improvement. The allocation of the budget among the various deliverables of IPBES was considered “fair”.** Synergies and balance between the four functions are an important consideration for the development of the second work programme.

Results – internal review

- Functioning of the Plenary, Bureau, Multidisciplinary Expert Panel and secretariat, including technical support units:
 - Sessions of the Plenary are considered to be well organized and conducted in an effective manner, with appropriate information and documentation, and decisions of the Plenary are considered to be effectively implemented. ... Advice to the Plenary on coordination between IPBES and other relevant institutions could be improved.
 - The Bureau has effectively discharged its mandate in implementing the administrative functions of IPBES, although it could improve its role in identifying donors and developing partnership arrangements for the implementation of activities of IPBES.
 - The MEP has effectively discharged its mandate in implementing the scientific functions of IPBES, although it could improve its role in engaging the scientific community and other knowledge holders with the work programme.
 - The secretariat has been very effective, in particular given that it was significantly understaffed for a long while. ... **The appropriateness of the size, composition and set-up of the secretariat, including its technical support units, is considered “fair”**; for the second work programme it is important to match the size of the work programme with adequate resources at the secretariat.

Results – internal review

- **Functioning of the task forces and expert groups:**
 - Interactions between the task forces, expert groups and assessments are considered in need of improvement. The capacity-building task group and the expert groups on scenarios and models and values have worked well. The work of other expert groups was considered “fair”.
- **Partnerships, stakeholder engagement and communication:**
 - Collaboration with partners within the United Nations system and with other relevant organizations, initiatives and networks has progressed but **overall collaboration is considered to be an area in need of improvement. Stakeholder engagement, outreach and communication are considered to need strengthening**, while it is acknowledged that a recent recruitment has significantly strengthened the communications and outreach activities. The visibility of IPBES needs to extend beyond ministries of environment.
- **Effectiveness of budgetary management and financial rules:**
 - Given the tight budgetary situation, it was recognized that there is a need to step up fundraising activities. The financial rules are considered to have been observed well, and the budget documents presented to the Plenary are **adequate**. Significant amounts of in-kind contributions have been obtained, reducing pressures on the IPBES trust fund.

IBEPS Review

- **IPBES/6/10 Review of the effectiveness of the administrative and scientific functions of the Platform (deliverable 4 (e))**
- **IPBES/6/INF/32 Review of the Platform: report of the internal review team**

BES
IPBES/6/10
Distr.: General
5 December 2017
Original: English

Intergovernmental Science-Policy Platform on Biodiversity and Ecosystem Services

IPBES/6/10
Distr.: General
5 December 2017
Original: English

Plenary of the Intergovernmental Science-Policy Platform on Biodiversity and Ecosystem Services
 Sixth session
 Medellín, Colombia, 18–24 March 2018
 Item 10 of the provisional agenda*
 Review of the Platform

Review of the effectiveness of the administrative and scientific functions of the Platform (deliverable 4 (e))

Note by the secretariat

Introduction

1. As part of the first work programme of the Intergovernmental Science-Policy Platform on Biodiversity and Ecosystem Services (IPBES), the Plenary, in decision IPBES-2/5, mandated a review of the effectiveness of the administrative and scientific functions of IPBES (deliverable 4 (e)), and requested the Multidisciplinary Expert Panel, in consultation with the Bureau, to develop a procedure for that review. At its fourth session, the Plenary considered a draft procedure for the review and requested the further refinement of the scope and terms of reference (decision IPBES-4/1, section VII).
2. At its fifth session, the Plenary adopted decision IPBES-5/2, in which it approved the terms of reference for the review (set out in the annex to the decision).
3. In the same decision, the Plenary requested the Bureau, in consultation with the Multidisciplinary Expert Panel, taking into account comments received at the fifth session of the Plenary, to revise the questionnaire set out in the appendix to the terms of reference; requested the secretariat to make the revised questionnaire available to members and stakeholders of IPBES for review for a period of two weeks after the fifth session of the Plenary; and requested the Bureau, in consultation with the Multidisciplinary Expert Panel, to finalize the questionnaire, taking into account the comments received during the two-week period.
4. The Plenary also approved the execution of an internal review by the Multidisciplinary Expert Panel and the Bureau and transmission of its conclusions to the external reviewers. It requested the internal review team to provide the report called for in paragraph 11 of the terms of reference to the Plenary at its sixth session.
5. The Plenary also requested the Executive Secretary to call for the nomination of candidates for the review panel, with a view to ensuring regional representation, and to conduct a consultation bidding process for an external professional organization to provide a summary overview of the work of the organization by the beginning of the sixth session.

Vertical (Value) Axis Major Gridlines

Plenary requested the review panel, in accordance with the terms of reference, to provide a final report on

* IPBES/6/1.
K/1709368 01018

* IPBES/6/1.
K/1709364 120118

BES
IPBES/6/INF/32
Distr.: General
20 December 2017
English only

Intergovernmental Science-Policy Platform on Biodiversity and Ecosystem Services

IPBES/6/INF/32
Distr.: General
20 December 2017
English only

Plenary of the Intergovernmental Science-Policy Platform on Biodiversity and Ecosystem Services
 Sixth session
 Medellín, Colombia, 18–24 March 2018
 Item 10 of the provisional agenda*
 Review of the Platform

Review of the Platform: report of the internal review team

Note by the secretariat

1. In decision IPBES-5/2, the Plenary of the Intergovernmental Science-Policy Platform on Biodiversity and Ecosystem Services (IPBES) approved the terms of reference for the review of the Platform, set out in the annex to the decision, and the execution of an internal review by the Multidisciplinary Expert Panel and the Bureau and the transmission of its conclusions to the external reviewers. Paragraph 5 of the terms of reference refers to the establishment of an internal review team, while paragraph 11 stipulates that the internal review team is to prepare a report from an internal perspective to be presented for the information of the Plenary at its sixth session.
2. Accordingly, the report prepared by the internal review team is set out in the annex to the present note. The report, which is presented without formal editing, has been endorsed by the Multidisciplinary Expert Panel and the Bureau. It contains an executive summary, which is based on a quantitative analysis of the ratings received in response to the finalized version of the questionnaire that was set out in the appendix to the annex to decision IPBES-5/2, the qualitative comments received as part of the same questionnaire, and aspects that the members of the internal review committee chose to highlight based on their experience. The report also contains a detailed section-by-section analysis of responses to the questionnaire. Appendix I to the report provides information on the mandate, process and methodology of the report. Appendix II provides, for each of the 99 questions of the questionnaire that allowed for a rating of 1 to 5, a column chart showing the percentage of each rating for each question, and the mean rating with standard deviation. For the 7 questions that did not allow for a rating, the report provides the percentage of 'yes' or 'no' responses that received the highest and lowest ratings, respectively. Appendix IV contains a summary overview of qualitative comments received as part of the questionnaire. Appendix V contains the final version of the questionnaire used as the basis for the report.

Vertical (Value) Axis Major Gridlines

* IPBES/6/1.
K/1709368 01018

* IPBES/6/1.
K/1709364 120118



3.

Next steps

At IPBES 6



The Plenary may wish:

- To take note with appreciation of the report prepared by the internal review team, the selection of a review panel to perform the review and the progress made in the selection of an external professional organization to coordinate the review.

Results of the internal review may contribute

- To discussions regarding the framework for the next work programme that is to guide the process in 2018 developing next work programme
- Further specify the focus of the external review

Until IPBES 7



External review:

- **Establishment of external review panel**
 - Call for nominations for members of the review panel and for expressions of interest from professional organisations to coordinate the external review: deadline 2 January 2018
 - Selection of 10 members of the review panel and 1 professional organisation to coordinate the external review by IPBES 6
 - IPBES/6/INF/33 Review of the Platform: information on the selection of the review panel and an external professional organization

- **External review**
 - Formally starting after IPBES 6 (pending decision on budget)
 - Reviewers joining 2 MEP and Bureau meetings in 2018

